

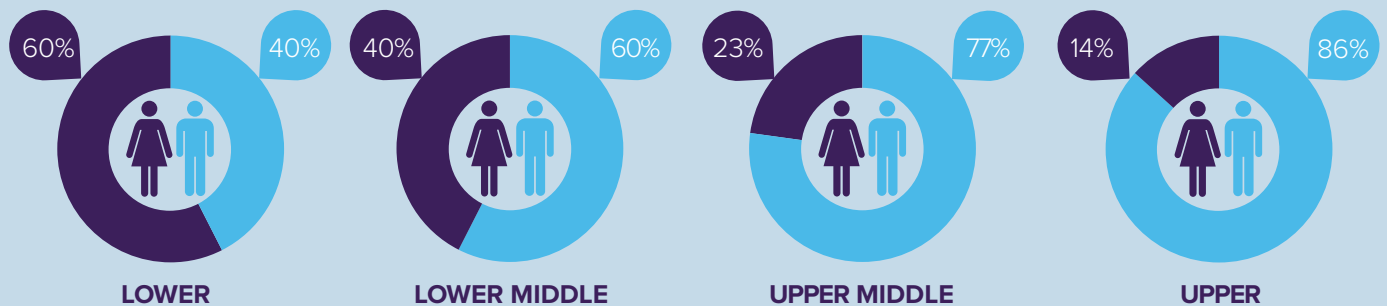
At Countrywide Surveying Services, we pride ourselves on our people who are our greatest asset and we champion the opportunities open to all our people throughout their career. Our business fosters an environment of opportunity and we firmly believe in promotion from within and appointing the right person for the role, based solely on ability.

gender pay & bonus gap

	MEAN	MEDIAN
HOURLY PAY	35%	46%
BONUS	59%	81%

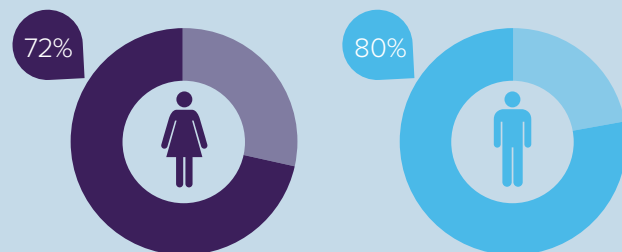
The hourly gender pay gap is the difference between the average hourly pay rate for males and females for the month of April 2022 expressed as a % of the male average. The bonus pay gap is the difference between the average of all bonuses, including commissions, paid to male and female employees in the 12 months up to and including April 2022 expressed as a % of the male average. "Average" is calculated in two ways, mean and median. The mean is the total male or female pay divided by the total number of males or females. The median is the pay received by the middle male or female when all hourly rates or bonuses are ranked in order.

pay quartiles



Our figures show the average hourly pay for male employees is more than female employees. This is due to a higher proportion of both senior and technical roles being occupied by men, creating the gap, and a higher proportion of lower paid administrative roles tending to be occupied by women. The gender pay gap demonstrates the overall difference in average earnings (mean and median) between men and women. This is not the same as equal pay, which is the difference between men and women carrying out the same role, similar roles or roles of equal value. Our policy is to pay men and women equally for doing equivalent jobs across our business.

proportion of males & females receiving a bonus



There has been an improvement in the mean and median pay gaps within Countrywide Surveying Services, when compared to the previous year. However as typical in our sector, the pay gap remains reflective of the higher number of males in technical roles that are generally higher paid when compared to administrative support roles which are primarily held by females.

Whilst there is no significant difference in the ability to earn a bonus when comparing males and females, the reported bonus gap is reflective of the high representation of males in management and technical roles and the higher earning opportunity that these roles attract.

our view

Our approach is to ensure we have the right person in each role, irrespective of gender. We are committed to a culture of meritocracy whereby career progression is based entirely on ability. We will continue to facilitate opportunities for all our people to progress and make sure that we regularly review fair practices and policies. We will continue to ensure we have a working environment where everyone has the same chance to be successful and where opportunities for development, promotion, recognition and rewards for excellence are irrespective of gender. We will continue to ensure that our approach to setting pay is fair, and that people performing similar roles, with similar experience, will be treated equally. Our people are our most valuable asset and we are committed to investing in them to achieve their full potential with no discrimination.

I confirm the data in this report to be accurate

Matthew Cumber, Managing Director 